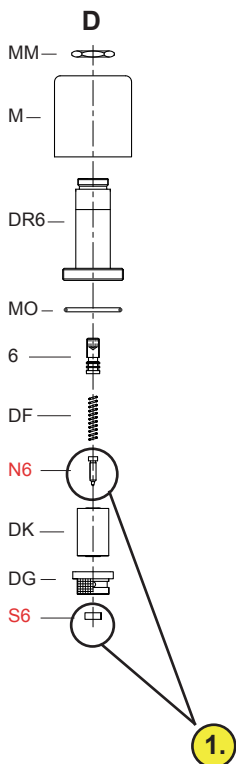


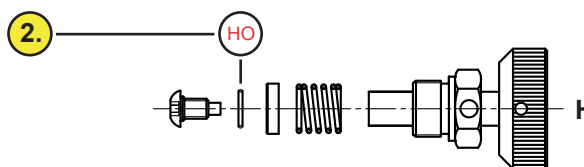
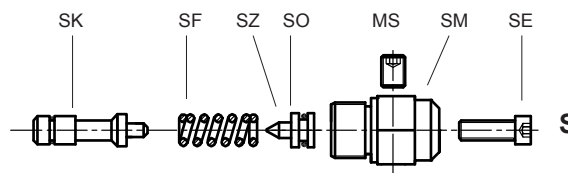
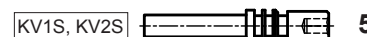


Elettrovalvole

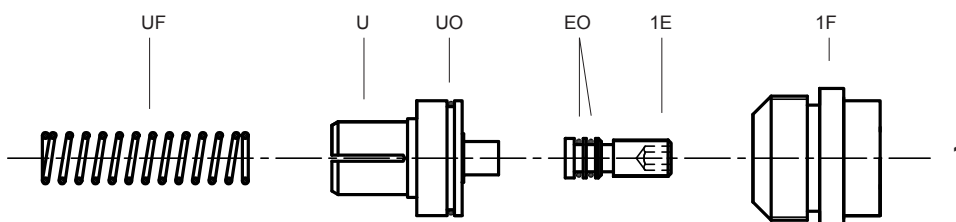


Dimensioni O-ring
EO 3,5 x 1,5 - P
UO 17 x 1 - V
YO 10 x 1 - V
XO 5,28 x 1,78 - P
HO 5,28 x 1,78 - V
VO 5,28 x 1,78 - V
O-ring: V=FKM-Viton P=NBR-Perbunan

Registrazioni



In presenza di difetti di tenuta interni, sostituire i componenti osservando l'ordine seguente:  
S6, N6, HO, V complet, XO (2 x XO con KV2).



4. Valvole di comando

