

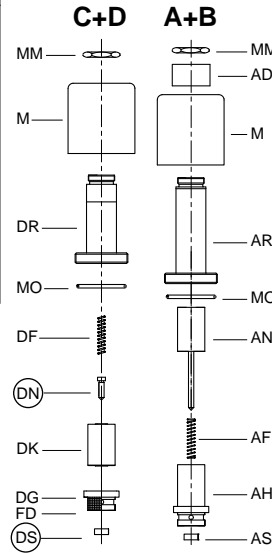


Pos.	No.	Item	
1	FS	Lock Screw - Flange	
	FO	O-Ring - Flange	
	1F	Flange - By Pass	
	EO	O-Ring - Adjustment	
	1E	Adjustment - By Pass	
	UO	O-Ring - By Pass Valve	
	U	By Pass Valve	
2	UD	Noise Suppressor	
	UF	Spring - By Pass	
2	2	Adjustment - Up Acceleration	
3	3	Adjustment - Up Deceleration	
4	EO	O-Ring - Adjustment	
	4E	Adjustment - Up Levelling	
	4F	Flange - Check Valve	
	FO	O-Ring - Flange	
	VF	Spring - Check Valve	
	W	Up-Levelling Valve	
	WO	O-Ring - Up Levelling Valve	
	VO	Seal - Check Valve	
5	V	Check Valve	
	W6	Screw - Check Valve	
	3	Adjustment - Up Stop	
	6	Adjustment - Down Acceleration	
	7	7F	Flange - Down Valve
		FO	O-Ring - Flange
		7O	O-Ring - Adjustment
7E		Adjustment - Down Valve	
UO		O-Ring - Down Valve	
XO		Seal - Down Valve	
8	X	Down Valve	
	XD	Noise Suppressor	
	F	Main Filter	
	8	Adjustment - Down Deceleration	
9	9E	Adjustment - Down Levelling	
	EO	O-Ring - Adjustment	
	9F	Spring - Down Valve	
H	Y	Down Levelling Valve	
	H	Manual Lowering - Self Closing	
S	HO	Seal - Manual Lowering	
	SE	Adjustment - Screw	
	SM	Hexagonal	
	MS	Grub Screw	
	SO	O-Ring - Nipple	
A+B	SZ	Nipple	
	SF	Spring	
	SK	Piston	
	MM	Nut - Solenoid	
	AD	Collar - Solenoid	
	M	Coil - Solenoid (indicate voltage)	
	AR	Tube - Solenoid 'Up'	
C+D	MO	O-Ring - Solenoid	
	AN	Needle - 'Up'	
	AF	Spring - Solenoid 'Up'	
	AH	Seat Housing - 'Up'	
	AS	Seat - Solenoid 'Up'	
	MM	Nut - Solenoid	
	M	Coil - Solenoid (indicate voltage)	
C+D	DR	Tube - Solenoid 'Down'	
	MO	O-Ring - Solenoid	
	DF	Spring - Solenoid 'Down'	
	DN	Needle - 'Down'	
	DK	Core - Solenoid	
	DG	Seat Housing with Screen-'Down'	
	FD	Filter Solenoid	
DS	Seat - Solenoid 'Down'		

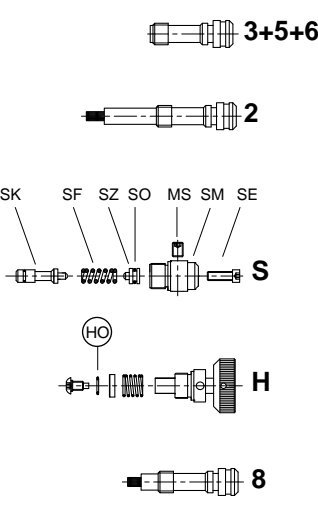
O-Ring-Size			
No.	3/4"	1 1/2"	2 1/2"
FO	26x2P	47x2.5P	58x3P *
EO	9x2P	9x2P	9x2P
UO	26x2V	39.34x2.62V	58x3V
WO	5.28x1.78V	5.28x1.78V	5.28x1.78V
VO	23x2.5V	42x3V	60x3V **
7O	5.28x1.78P	9x2P	9x2P
XO	13x2V	30x3V	47x3V
HO	5.28x1.78V	5.28x1.78V	5.28x1.78V
SO	5.28x1.78P	5.28x1.78P	5.28x1.78P
MO	26x2P	26x2P	26x2P

\* FO by 4F 2 1/2" is 67x2.5P  
 \*\* 90 Shore  
 O-Ring: V=FKM-Viton  
 P=NBR-Perbunan

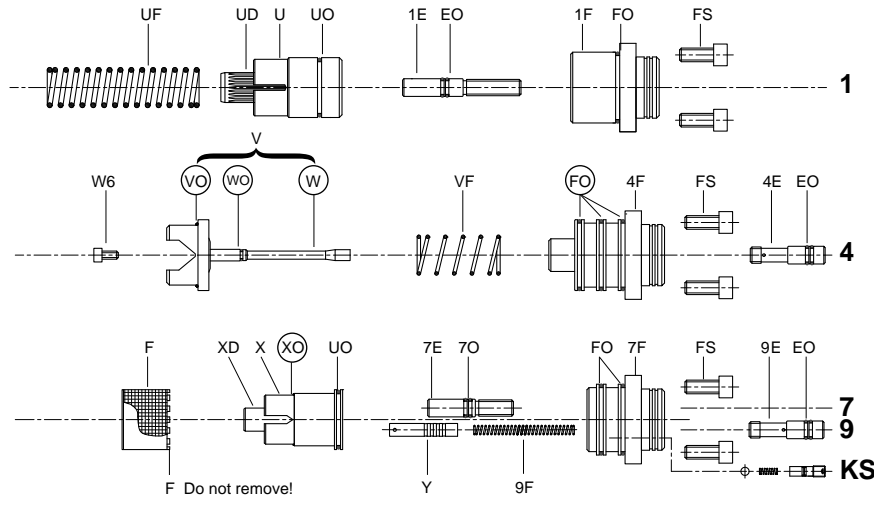
Solenoid Valves



Adjustments

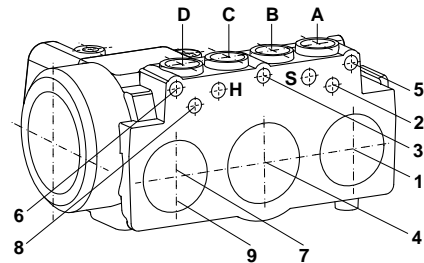
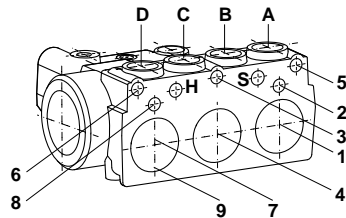
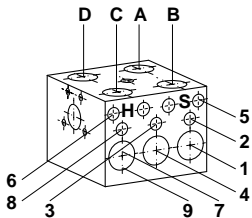


Flow Valves



In case of down leakage, replace and test in the following order: (DS) & (DN), (XO), (VO), (WO), (FO) + (HO).

**⚠ Taper threads:** Do not exceed 8 turns of piping into the valve connections.

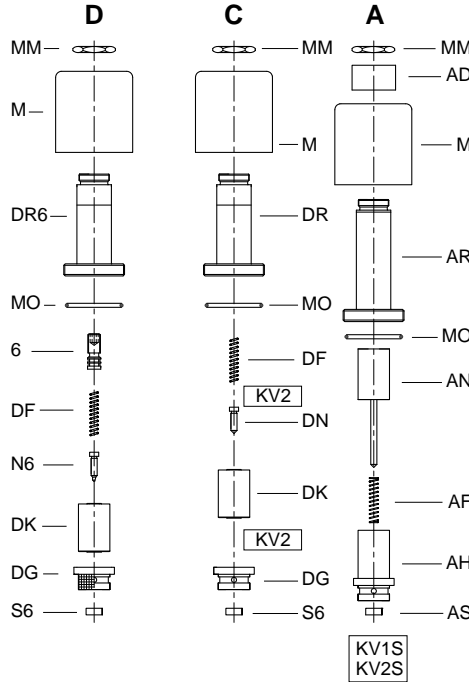


To order EV 100, state pump flow, empty car pressure (or flow guide size) and solenoid voltage.  
 Example order: EV 100, 380lpm, 18 bar (empty), 110 AC ≡ EV 100/4/110AC

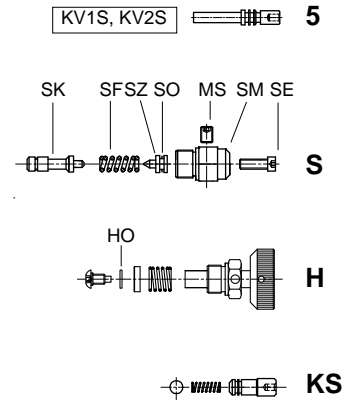


Pos. No.	Item
1	1F Flange - Bypass 1E Adjustment - Bypass EO 0-Ring - Adjustment (3,5x1,5 - P) U Flow Guide - Bypass UO 0-Ring - Bypass (17x1 - V) UF Spring - Bypass
5	5 Adjustment - Up Stop
6	6 Adjustment - Down Acceleration
7+9	7E Adjustment - Down Valve 9F Spring - Down Valve YO 0-Ring - Flow Guide (10x1 - V) XO Seal - Flow Guide (5.28x1.78 - V) XT 0-Ring Disc FI Filter - Down Valve X Down Flow Guide (Brass) Y Down Levelling Flow Guide (Steel) - KV2 Y Down Flow Guide (Steel) - KV1
S	SE Adjustment Screw - Relief Valve SM Hexagonal - Relief Valve MS Locking Screw SO 0-Ring - Nipple SZ Nipple - Relief Valve SF Spring - Relief Valve SK Piston - Relief Valve
H	H Manual Lowering - Self Closing HO Seal - Man. Lowering (0-Ring 5.28x1.78 - V)
HA	HA Adjustable Manual Lowering
KS	KS Slack Rope Valve
A	MM Nut Solenoid AD Collar Solenoid M Coil Solenoid (indicate voltage) AR Tube Solenoid 'Up' MO 0-Ring Solenoid AN Needle Solenoid 'Up' AF Spring Solenoid 'Up' AH Seat Housing 'Up' AS Seat Solenoid 'Up'
C+D	M Coil Solenoid (indicate voltage) C DR Tube - Solenoid 'Down', w/o adj. 6 D DR6 Tube Solenoid 'Down', with adj. 6 MO 0-Ring Solenoid DF Spring Solenoid 'Down' C DN Needle Solenoid 'Down' D N6 Needle Solenoid 'Down' (Nipple) C HN Needle Solenoid 'Down' DK Core Solenoid 'Down' DG Seat Housing 'Down' (Solen.D with screen) C S6 Seat Solenoid 'Down' C CO 0-Ring Seat Housing
Z	ZA Cylinder Thread Connection V Check Valve VO 0-Ring Check Valve (5,28x1,78 - V) F Main Filter
L	L Gauge Shut Off Cock
0-Rings: V=FKM-Viton P=NBR-Perbunan	

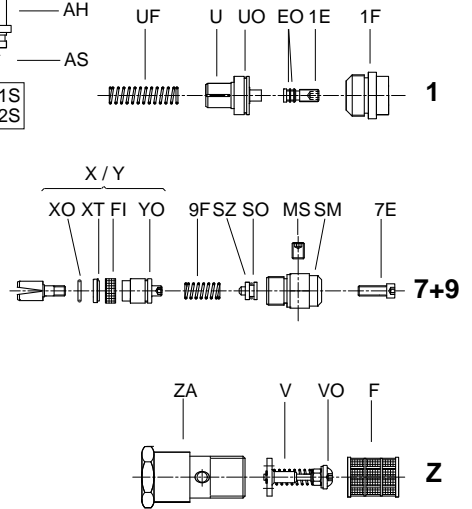
**Solenoid Valves**



**Adjustments**



**Flow Valves**



In case of down leakage, replace and test in the following order:  
S6, N6, HO, V complete, XO, (2x XO with KV2).

